

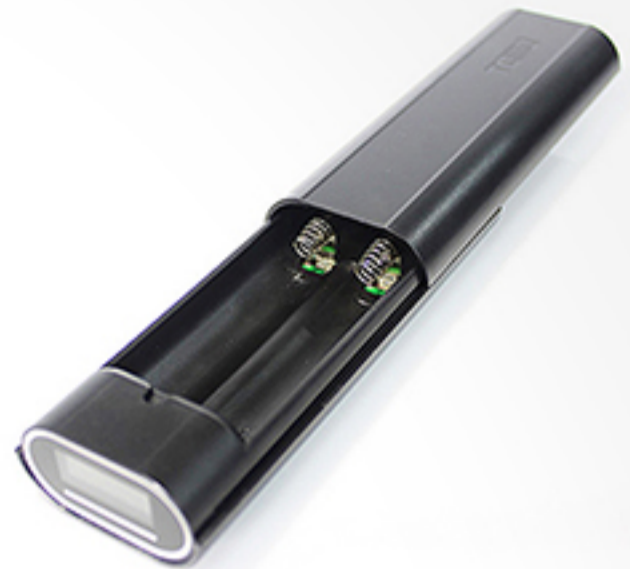
ACCESSORIES

400032



Type: TOMO USB interface charger
Voltage: 5V
Current: 1A
Size: 85*130*25mm
Weight: 140g

400033



Type: TOMO USB interface charger
Voltage: 5V
Current: 1A
Weight: 30*130*25mm
Weight: 75g

400001



Type: Samsung core 18650 Li-ion battery
Voltage: 3.7v~4.2V
Capacity: 2600mAh
Protection board: YES
Size: 68.5*18.2mm
Weight: 50g

400008



Type: Samsung core 18650 Li-ion battery
Voltage: 3.7v~4.2V
Capacity: 3000mAh
Protection board: NO
Size: 65*18mm
Weight: 50g